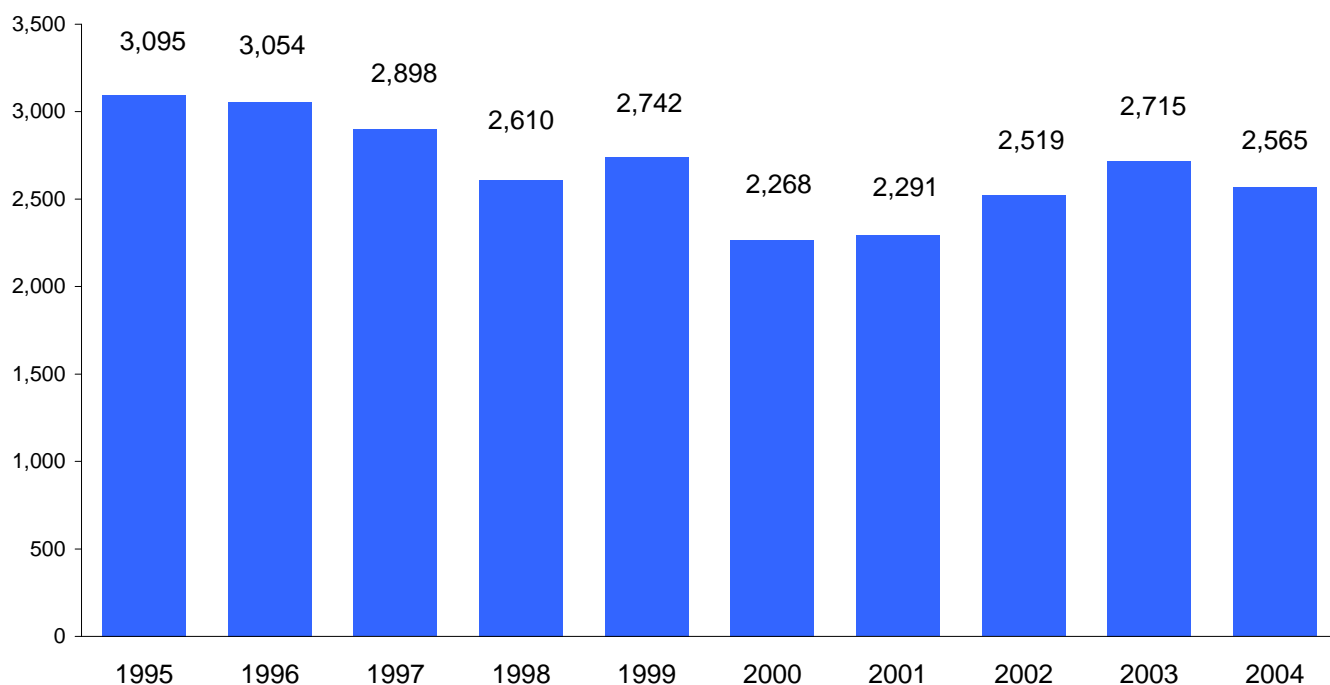


**Table 2.1 UVI Headcount Enrollment by Level and Status
Fall 1995-2004**

Fall	Undergraduates		Graduates	Total
	Full-Time	Part-Time	Total	Headcount
1995	1,306	1,489	300	3,095
1996	1,359	1,418	277	3,054
1997	1,302	1,364	232	2,898
1998	1,189	1,210	211	2,610
1999	1,259	1,280	203	2,742
2000	1,112	1,002	154	2,268
2001	1,101	1,003	187	2,291
2002	1,128	1,110	281	2,519
2003	1,249	1,187	279	2,715
2004	1,231	1,121	213	2,565

**Figure 2.1 Total Headcount Enrollment
Fall 1995-2004**

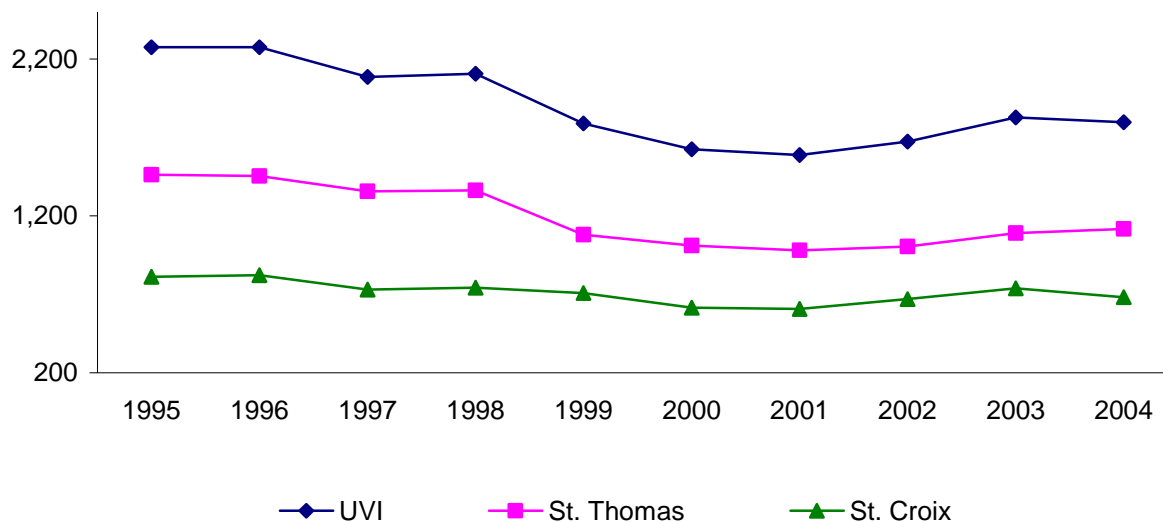


**Table 2.2 Undergraduate Full-time Equivalent Enrollment (FTE) by Campus
Fall 1995-2004**

Fall	UVI FTE			St. Thomas FTE			St. Croix FTE		
	All	FT *	PT**	All	FT	PT	All	FT	PT
1995	2,274	1,627	648	1,462	1,117	345	812	510	302
1996	2,274	1,589	685	1,453	1,084	369	821	505	316
1997	2,086	1,468	618	1,355	1,011	344	731	457	273
1998	2,105	1,502	603	1,363	1,034	330	742	468	274
1999	1,788	1,259	529	1,079	791	288	709	468	241
2000	1,625	1,112	513	1,010	726	284	615	386	229
2001	1,588	1,101	487	981	727	254	607	374	233
2002	1,673	1,128	545	1,004	718	286	669	410	259
2003	1,828	1,249	579	1,090	792	298	738	457	281
2004	1,797	1,231	566	1,116	816	300	681	415	266

* Full-time, ** Part-time

**Figure 2.2 Undergraduate Full-time Equivalent
Fall 1995-2004**

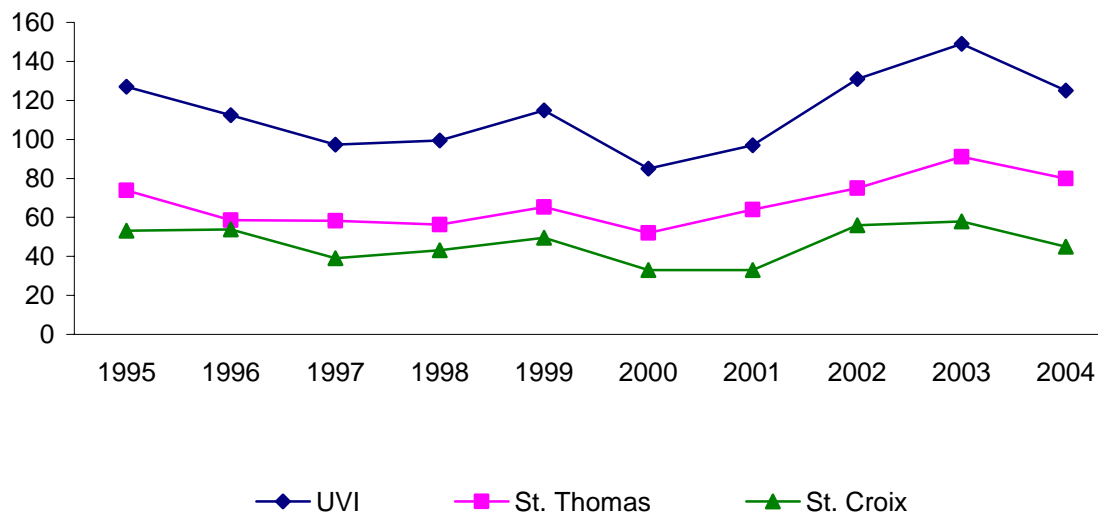


**Table 2.3 Graduate Full-time Equivalent Enrollment (FTE) by Campus
Fall 1995-2004**

Fall	UVI FTE			St. Thomas FTE			St. Croix FTE		
	All	FT*	PT**	All	FT	PT	All	FT	PT
1995	127	24	103	74	15	59	53	9	44
1996	112	29	83	59	17	42	54	12	42
1997	97	25	72	58	16	43	39	10	29
1998	100	30	69	56	17	39	43	13	30
1999	115	28	87	65	22	43	50	6	44
2000	85	21	64	52	14	38	33	7	26
2001	97	19	78	64	11	53	33	8	25
2002	131	21	110	75	10	65	56	11	45
2003	149	34	115	91	20	71	58	14	44
2004	125	27	98	80	21	59	45	6	39

* Full-time, ** Part-time

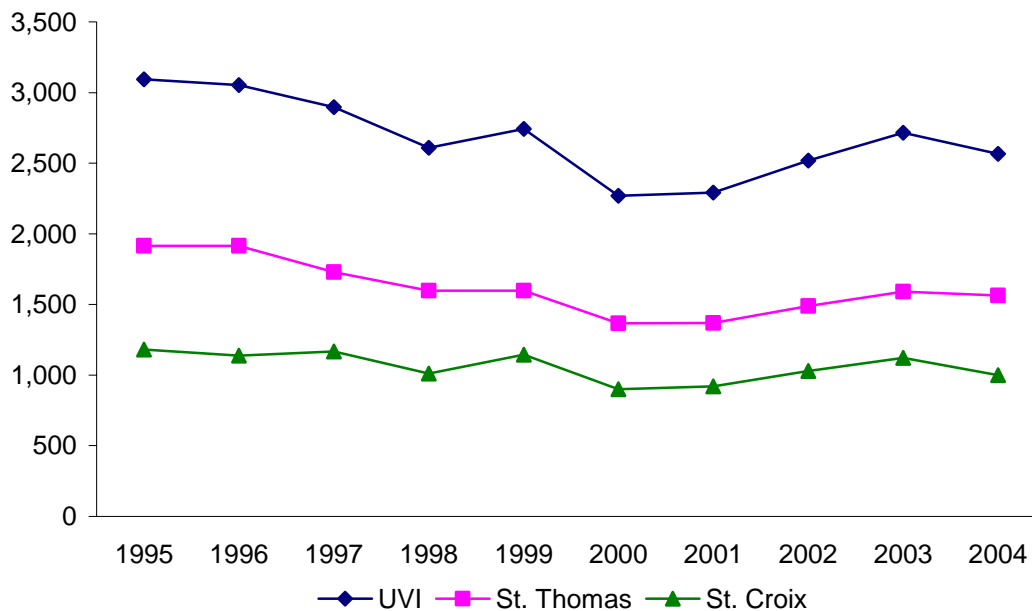
**Figure 2.3 Graduate Full-time Equivalent
Fall 1995-2004**



**Table 2.4 Headcount Enrollment by Campus
Fall 1995-2004**

Fall	Total (UVI)	St. Thomas		St. Croix	
	Headcount	Headcount	Percent	Headcount	Percent
1995	3,095	1,915	62	1,180	38
1996	3,054	1,916	63	1,138	37
1997	2,898	1,730	60	1,168	40
1998	2,610	1,598	61	1,012	39
1999	2,742	1,597	58	1,145	42
2000	2,268	1,368	60	900	40
2001	2,291	1,370	60	921	40
2002	2,519	1,489	59	1,030	41
2003	2,715	1,592	59	1,123	41
2004	2,565	1,565	61	1,000	39

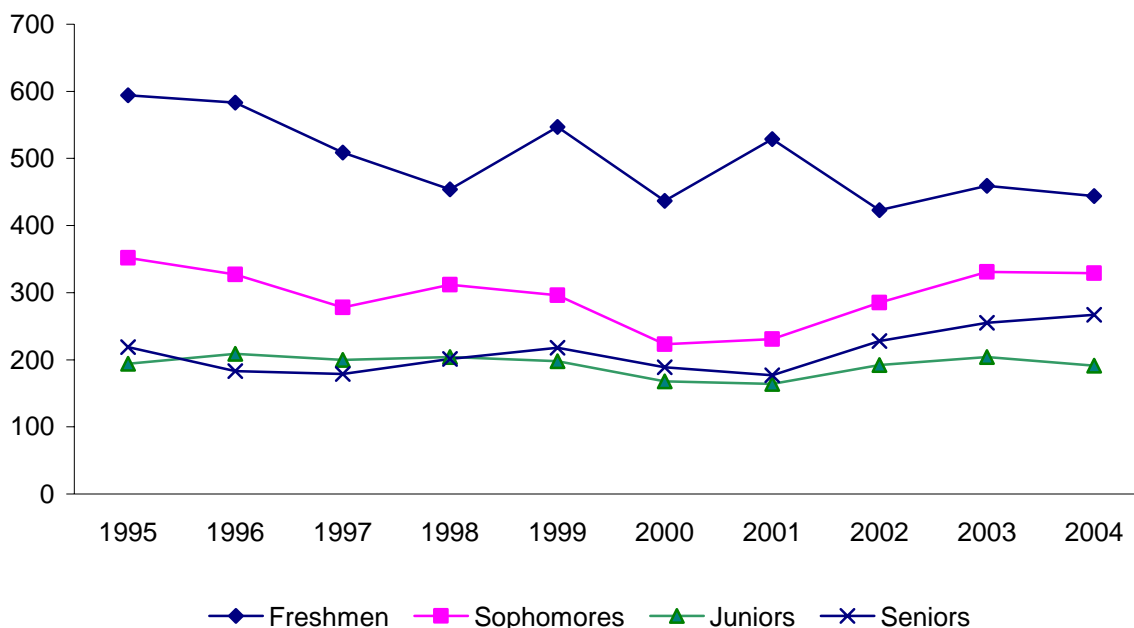
**Figure 2.4 Headcount Enrollment by Campus
Fall 1995-2004**



**Table 2.5 UVI Full-time Undergraduate Enrollment by Class
Fall 1995-2004**

Fall	Total	Freshmen		Sophomores		Juniors		Seniors		Unclassified	
		Count	Percent	Count	Percent	Count	Percent	Count	Percent	Count	Percent
1995	1,359	594	44	352	26	194	14	219	16	0	0
1996	1,302	583	45	327	25	209	16	183	14	0	0
1997	1,166	509	44	278	24	200	17	179	15	23	53
1998	1,193	454	38	312	26	204	17	201	17	22	2
1999	1,259	547	43	296	24	198	16	218	17	0	0
2000	1,112	437	39	223	20	168	15	189	17	95	9
2001	1,101	529	48	231	21	164	15	177	16	0	0
2002	1,128	423	38	285	25	192	17	228	20	0	0
2003	1,249	459	37	331	27	204	16	255	20	0	0
2004	1,231	444	36	329	27	191	16	267	22	0	0

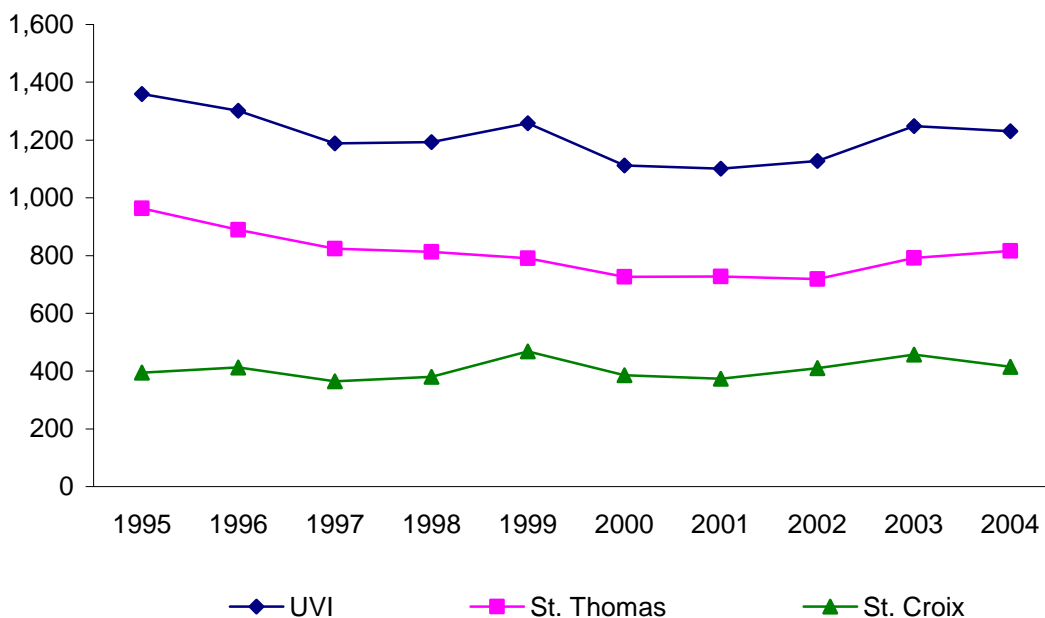
**Figure 2.5 UVI FT Undergraduate Enrollment by Class
Fall 1995-2004**



**Table 2.6 Full-time Undergraduate Enrollment by Campus
Fall 1995-2004**

Fall	Total (UVI)	St. Thomas		St. Croix	
	Count	Count	Percent	Count	Percent
1995	1,359	964	71	395	29
1996	1,302	889	68	413	32
1997	1,189	824	69	365	31
1998	1,193	813	68	380	32
1999	1,259	791	63	468	37
2000	1,112	726	65	386	35
2001	1,101	727	66	374	34
2002	1,128	718	64	410	36
2003	1,249	792	63	457	37
2004	1,231	816	66	415	34

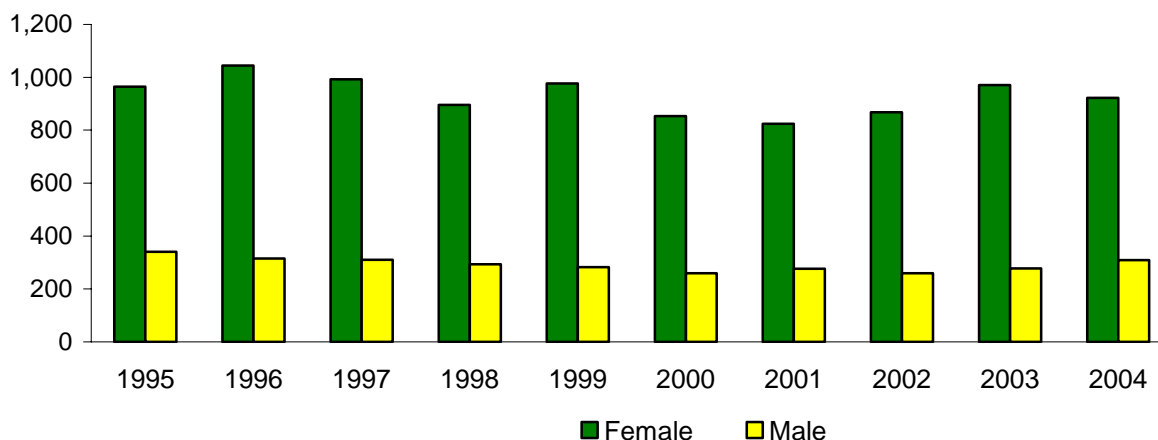
**Figure 2.6 Full-time Undergraduate Enrollment by Campus
Fall 1995-2004**



**Table 2.7 UVI Full-time Undergraduate Enrollment by Gender
Fall 1995-2004**

Fall	Total	Female		Male	
	Count	Count	Percent	Count	Percent
1995	1,306	965	74	341	26
1996	1,359	1,044	77	315	23
1997	1,302	992	76	310	24
1998	1,189	896	75	293	25
1999	1,259	977	78	282	22
2000	1,112	853	77	259	23
2001	1,101	825	75	276	25
2002	1,128	868	77	260	23
2003	1,249	971	78	278	22
2004	1,231	922	75	309	25

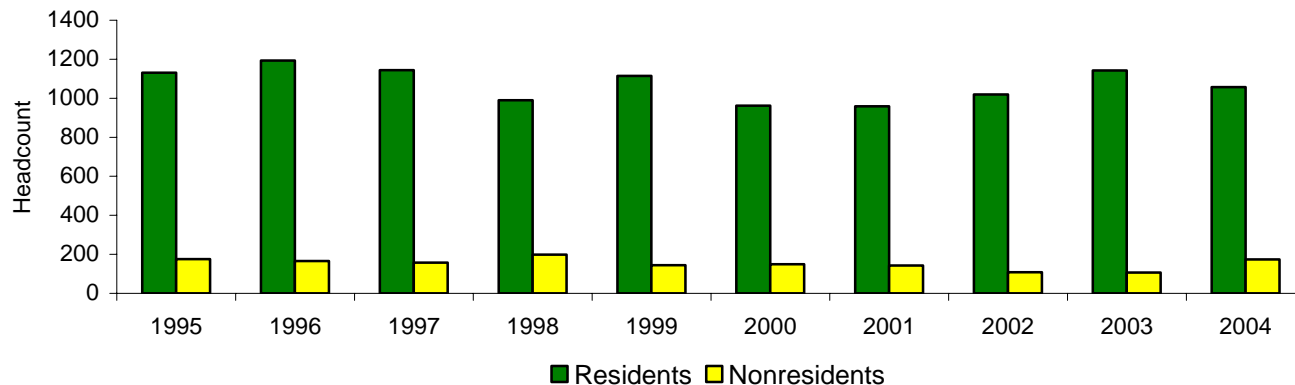
**Figure 2.7 UVI Full-time Undergraduate Enrollment by Gender
Fall 1995-2004**



**Table 2.8 UVI Full-time Undergraduate Enrollment by Residency
Fall 1995-2004**

Fall	Total Full-time	Residents		Nonresidents	
		Count	Percent	Count	Percent
1995	1306	1131	87	175	13
1996	1359	1194	88	165	12
1997	1302	1144	88	158	12
1998	1189	990	83	199	17
1999	1259	1115	89	144	11
2000	1112	962	87	150	13
2001	1101	958	87	143	13
2002	1128	1020	90	108	10
2003	1249	1143	92	106	8
2004	1231	1057	86	174	14

**Figure 2.8 UVI Full-time Undergraduate Enrollment by Residency
Fall 1995-2004**

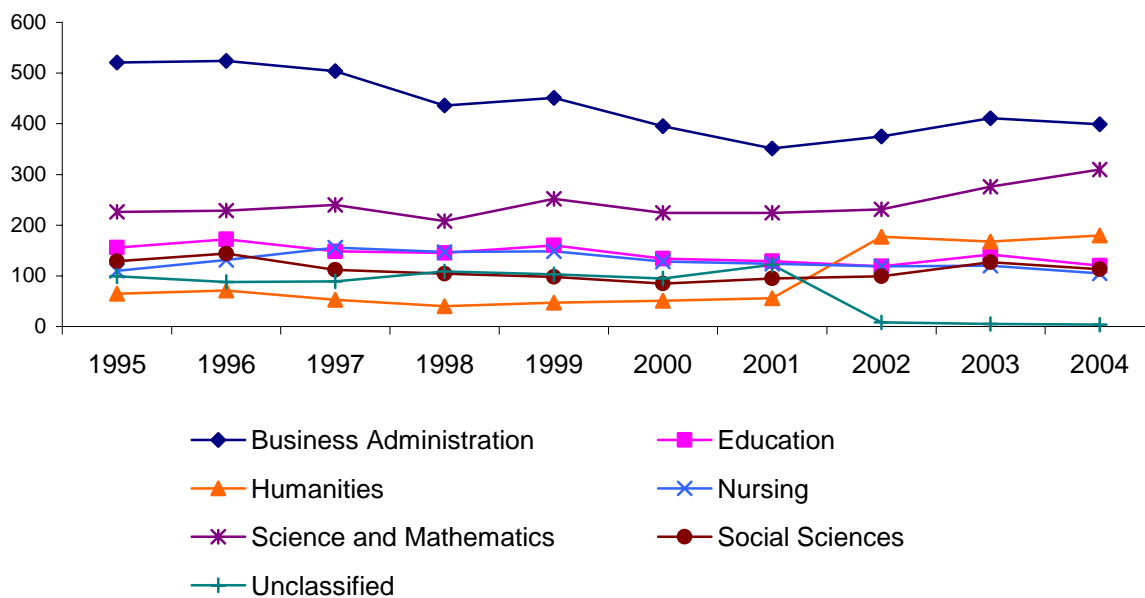


**Table 2.9 UVI Full-time Undergraduate Enrollment by Division
Fall 1997-2004**

Division	1997	1998	1999	2000	2001	2002	2003	2004
Business Administration	504	436	451	395	351	375	411	399
Education	148	145	160	134	129	119	142	120
Humanities	53	40	47	51	56	177	168	180
Nursing	156	147	148	128	124	119	120	105
Science and Mathematics	240	208	252	224	224	231	276	310
Social Sciences	112	104	98	85	95	99	127	113
Unclassified*	89	109	103	95	122	8	5	4
Total	1302	1189	1259	1112	1101	1128	1249	1,231

*Unclassified includes undecided and no CIP code assigned.

**Figure 2.9 UVI Full-time Undergraduate Enrollment by Division
Fall 1995-2004**



**Table 2.10 UVI Full-time Undergraduate Enrollment by Division and Major
Fall 1995-2004**

Division/Major	1995	1996	1997	1998	1999	2000	2001	2002	2003	2004
BUSINESS ADMINISTRATION										
Accounting (AA Program)	10	11	*	5	8	10	9	11	18	17
Accounting (BA Program)	125	145	133	121	119	109	81	87	93	104
Business Administration	320	286	275	257	261	205	190	199	214	201
Business Management	24	28	17	17	21	20	24	28	34	27
Data Processing/Computer Info. Sys.	27	25	6	4	30	41	39	43	46	46
Hotel and Restaurant Management	8	4	2	5	10	10	8	10	7	5
Office Assistance/Office Systems	10	5	3	2	2	0	0	0	2	0
EDUCATION										
Early Childhood Education	0	0	0	0	0	0	0	4	6	13
Elementary Education	168	144	143	143	159	132	126	113	129	104
Vocational Education	4	4	2	1	1	2	3	1	0	0
HUMANITIES										
English	19	14	15	17	21	19	26	15	24	21
Humanities	9	5	3	2	2	9	3	8	10	7
Humanities with Journalism	13	8	7	11	5	5	9	3	8	5
Journalism	0	0	0	0	0	0	0	1	2	1
Music Education	14	14	8	11	12	8	7	6	12	13
Spanish	4	2	1	1	0	*	0	1	0	0
Speech Comm. and Theater	12	10	6	3	7	10	11	9	14	15
Undecided	0	0	0	0	0	0	0	131	103	111
NURSING										
Nursing	131	156	147	144	148	128	124	119	122	108
SCIENCE AND MATH										
Biology	119	120	99	103	103	88	73	103	110	126
Chemistry	27	20	10	14	15	10	11	11	15	16
Chemistry with Physics	3	0	0	0	*	0	0	0	0	0
Computer Science	17	32	43	69	93	89	90	60	71	78
Engineering	6	18	*	2	*	7	9	14	19	17
Marine Biology	33	33	30	21	20	18	25	21	22	25
Mathematics	23	16	19	19	19	11	13	10	17	25
Physics	0	1	1	2	2	1	3	2	2	0
Pre-Medical Technology	1	0	0	0	0	0	0	0	0	0
Processed Technology	*	*	*	*	*	*	*	9	18	21
undecided	0	0	0	0	0	0	0	0	1	4
SOCIAL SCIENCES										
Caribbean Studies	0	1	*	*	0	0	0	0	0	0
Police Science and Administration	10	4	7	7	8	9	11	13	11	8
Psychology	66	57	51	53	48	54	59	68	86	81
Social Sciences	42	20	13	32	39	21	24	18	25	21
Social Work	26	30	33	9	3	1	1	0	3	7